

DRIVEN
ENTERPRISE

www.drivenenterprise.in



FOOD COLOURS | LAKE COLOURS
D&C COLOURS | FD&C COLOURS | BLENDED FOOD COLOURS

CONTACT US:



+91) 9023495236



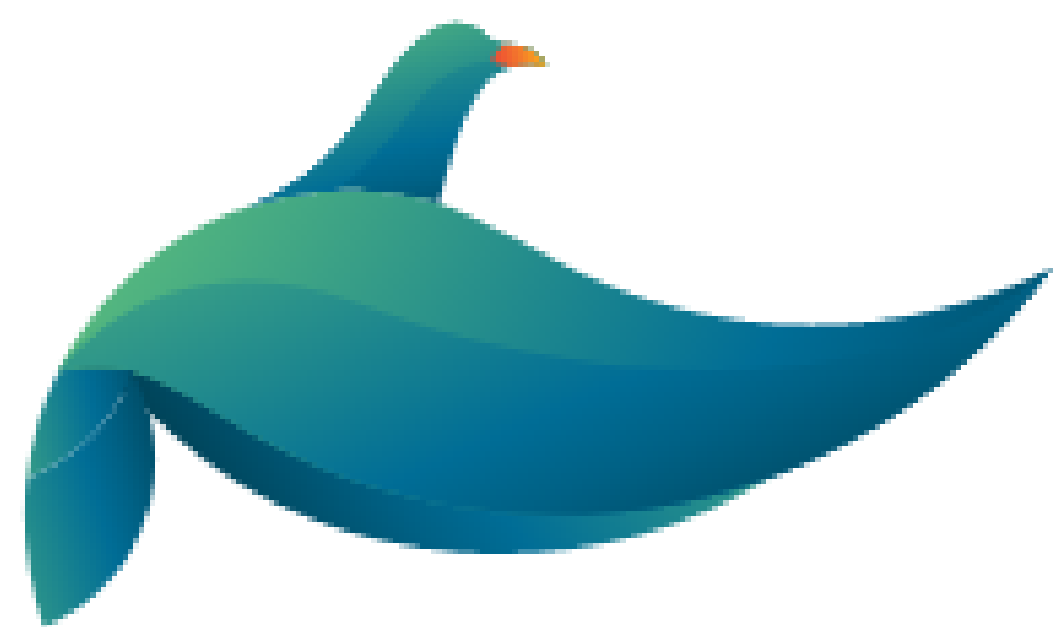
sales@drivenenterprise.in



export@drivenenterprise.in

ADDRESS:

C 503, SG Business Hub, Near Gota
Bridge, SG Highway, Gota, Ahmedabad,
Gujarat, India – 380081



DRIVEN ENTERPRISE

www.drivenenterprise.in



APPLICATIONS:

- ★ DESSERTS
- ★ SOFT DRINKS
- ★ HEALTH DRINKS
- ★ JAMS & MARMALDES
- ★ CONFECTIONERY/CANDIES
- ★ SNACKS
- ★ DRIED & CANNED FRUITS
- ★ NOODLES
- ★ SYRUPS
- ★ CAPSULES

WE ARE MEMBER OF

- ★ GUJARAT CHAMBER OF COMMERCE & INDUSTRY.
- ★ INDO AUSTRALIAN CHAMBER OF COMMERCE.
- ★ BASIC CHEMICALS, PHARMACEUTICALS & COSMETIC EXPORT PROMOTION COUNCIL (CHEMEXCIL)

ABOUT US:

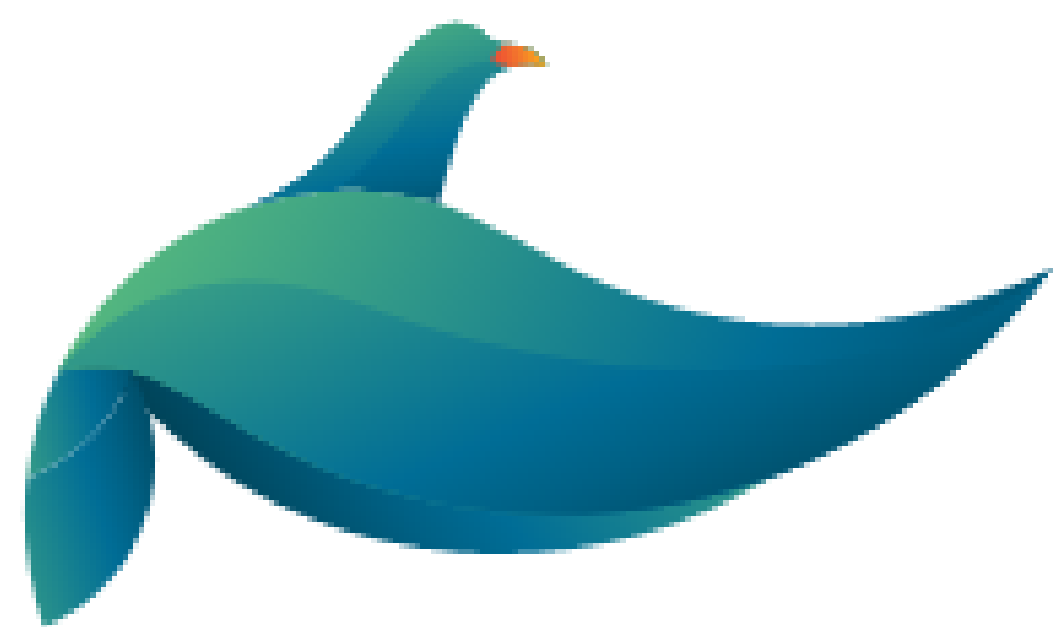
“DRIVEN ENTERPRISE” Has 20 Years Of Worldwide Experience In The Field Of Manufacturing And Exporting Of Food Colours, Lake Colours, FD&C colours, D&C colours and Blended food colours.

FOOD COLOURS AND PHARMACEUTICAL COLOURS:

We manufacture & export high purity Water - Soluble & Lake Colours for the food, beverages, confectionery and pharmaceutical industries. All water-soluble colours are also available in micro-fine powders and dust-free granules. All Food Colours can be available with FDA Certifications.

TOILETRY COLOURS AND COSMETIC COLOURS

We manufacture & export wide range of Water Soluble Colours for the cosmetic, personal care and toiletry applications. We develop colours with in- house technology. A specially developed range of USA FDA certified D&C colours for highly specialized applications like lipstick, shampoos, toothpaste, colour cosmetics etc.



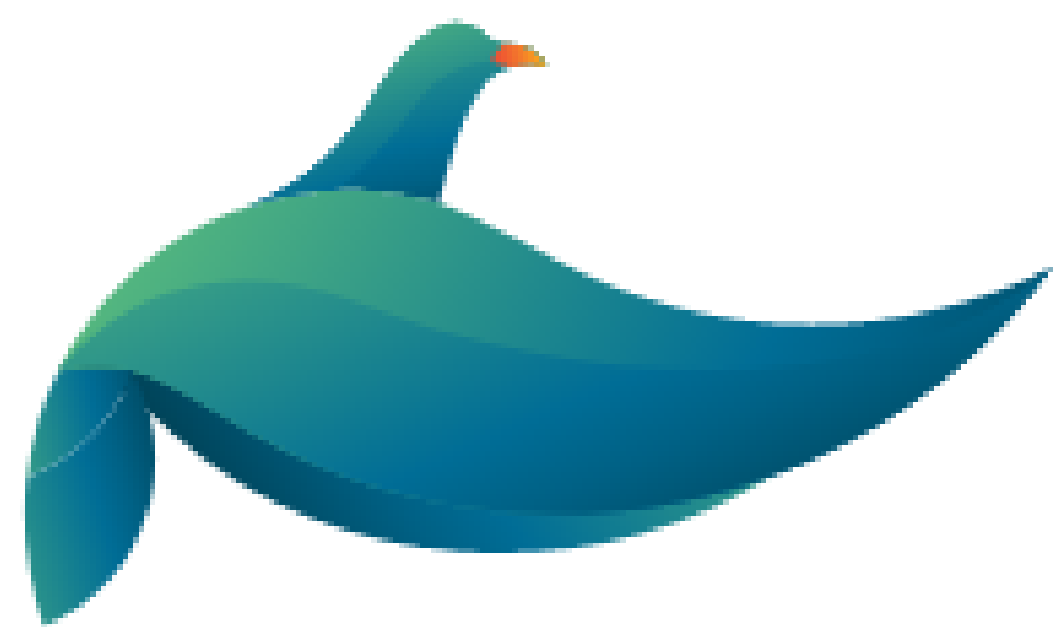
DRIVEN ENTERPRISE

www.drivenenterprise.in

FOOD COLOURS:

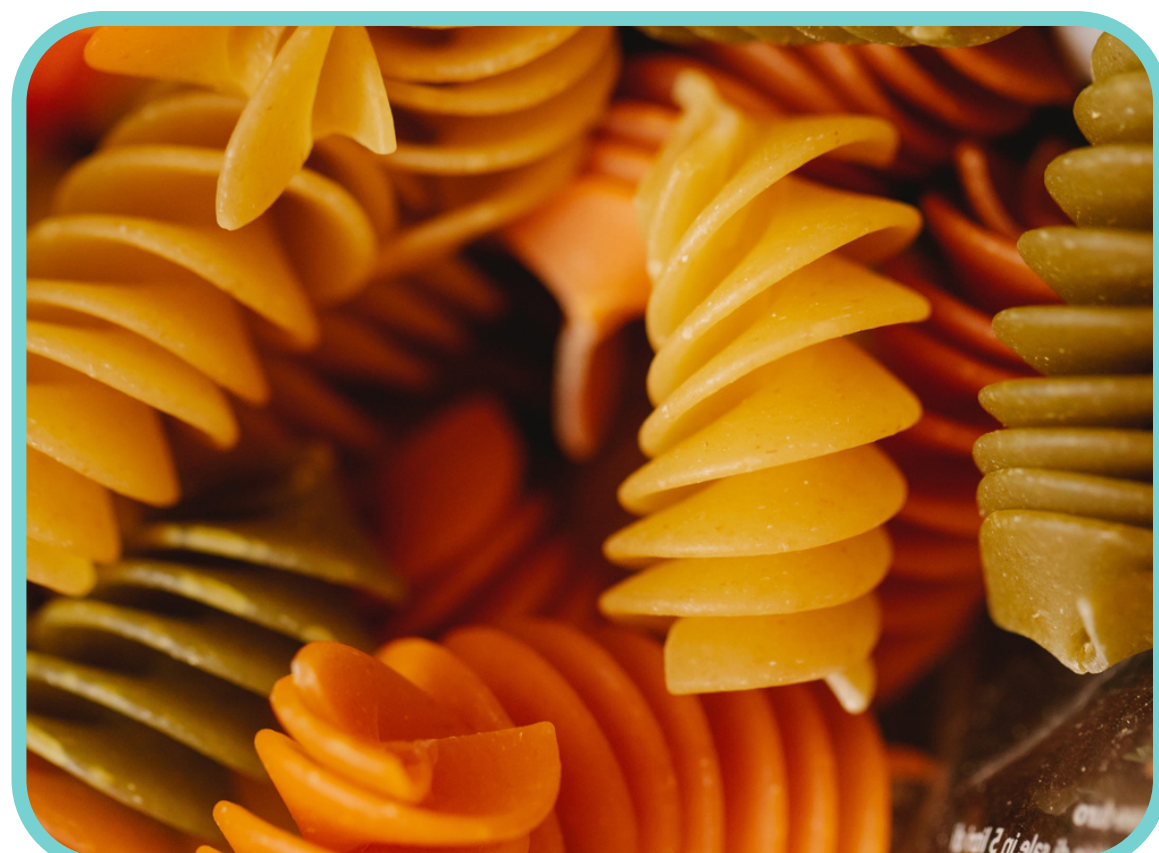
PRODUCTS	SYNONYMS	C.I. No	F.D & C.No.	EEC No.	Pure Dye Content % by wt (Minimum)	Volatile, Chloride, Sulphate matter at 135 °C by wt (Maximum)	Water Insoluble Matter by wt (Maximum)	Ether Extract (Maximum)	Subsidiary Dyes (Maximum)	Dye Intermediates by wt (Maximum)	Lead mg/kg (Maximum)	Arsenic mg/kg (Maximum)	Heavy Metals (as Pb) mg/kg (Maximum)
Tartrazine	Food Yellow 4 [Trisodium-5-hydroxy- 1-(4-sulphonatophenyl)-4-(4-sulphonatophenylazo)-H-pyrazol-3-carboxylate]	19140	Yellow 5	E102	85%	15%	0.20%	0.20%	1.00%	0.50%	10	3	40
Sunset Yellow FCF	Food Yellow 3 [Disodium 2-hydroxy- -(4-sulphonatophenylazo)naphthalene-6-sulfonate]	15985	Yellow 6	E110	85%	15%	0.20%	0.20%	5.00%	0.50%	10	3	40
Ponceau 4R	Food Red 7 [Trisodium-2-hydroxy- 1-(4-sulfonato-1-naphthylazo)naphthalene-6, 8-disulfonate]	16255	----	E124	82%	15%	0.20%	0.20%	1.00%	0.50%	10	3	40
Carmoisine	Food Red 3 [Disodium 4-hydroxy-3-(4-sulfonato-1-naphthylazo) naphthalene-1-sulfonate]	14720	----	E122	85%	15%	0.20%	0.20%	2.00%	0.50%	10	3	40
Indigo Carmine	Food Blue 1 [Disodium 3,3'-dioxo-2, 2'-bi-idolyliedene-5, 5'-disulfonate]	73015	Blue 2	E132	85%	15%	0.20%	0.20%	1.00%	0.50%	10	3	40
Erythrosine	Food Red 14 [Disodium 2 -(2,4,5,7-tetraido-3-oxido-6-oxoxanthen-9-yl)benzoate monohydrate]	45430	Red 3	E127	85%	15%	0.20%	0.20%	4.00%	0.50%	10	3	40
Brilliant Blue FCF	Food Blue 2 [Disodium α -(4-N-ethyl-3-sulfonatobenzylamino)phenyl)-α-(4-N-ethyl-3-sulfonatobenzylamino) cyclohexa-2,5-dienylidene) toluene-2-sulfonate]	42090	Blue 1	E133	85%	15%	0.20%	0.20%	6.00%	1.80%	10	3	40
Chocolate Brown HT	Food Brown 3 [Disodium 4,4'-(2,4-dihydroxy- 5 - hydroxymethyl-1, 3 phenylene bisazo) di (naphthalene-1-sulfonate)]	20285	----	E155	70%	27%	0.20%	0.20%	10.00%	0.20%	10	3	40
Amaranth	Food Red 9 [Trisodium 2- hydroxy-1 - (4-sulfonato-1 -naphthylazo) naphthalene-3,6-disulfonate.]	16185	Red 2	E123	85%	15%	0.20%	0.20%	3.00%	0.50%	10	3	40
Quinoline Yellow (WS)	Food Yellow 13 [The disodium salt of the disulfonate of 2-(2-Quinolyt) indan-1, 3-dione (principal component)]	47005	----	E104	70%	30%	0.20%	0.20%	4.00%	0.50%	10	3	40
Allura Red	Food Red 17 [Disodium 2- Hydroxy- 1- (2-methoxy- 5- methyl -4- sulfonatophenylazo) naphthalene 6-sulfonate.]	16035	Red 40	E129	85%	15%	0.20%	0.20%	3.00%	0.50%	10	3	40
Patent BlueV	Food Blue 5 [The calcium or sodium compound of [4-(α - (4 - diethylanminophenyl) - 5-hydroxy-2, 4-disulfophenyl-methylidene) 2, 5-cyclohexadien-1-ylidene 1 diethy-ammonium hydroxide inner salt]	42051	----	E131	85%	15%	0.20%	0.20%	2.00%	0.50%	10	3	40
Black PN	Food Black 1 [Tetrasodium 4- acetamido-5-hydroxy -6- [7-sulfonato-4- (4-sulfonatophenylazo) - 1 - naphthylazol] naphthalene 1,7-disulfonate)]	28440	----	E151	80%	20%	0.20%	0.20%	10.00%	0.80%	10	3	40
Fast Red E	---- [Disodium 2- hydroxy-1 (4 -sulphonato-naphthylazo) naphthalene-6-sulphonate]	16045	----	----	85%	15%	0.20%	0.20%	2.00%	0.50%	10	3	40
Food Green S	Food Green 4 [Sodium N-[4-[[4-(dimethylamino) phenyl] [2-hydroxy-3, 6-disulfo-1-naphthalenyl]-methylene]-2,5-cyclohexadien-1-ylidene]-N-methyimethanaminium; [Sodium 5-[4-dimethylamino-α (4-dimethyliminocyclohexa-2,5-dienylidene) benzyl] -6-hydroxy-7-sulfonato-naphthalene-2-sulfonate)	44090	----	E142	80%	20%	0.20%	0.20%	1.00%	0.50%	10	3	40
Food Red 2G	Food Red 10 [Disodium 8-acetamido-1-hydroxy-2-phenylazo-napthalene-3, 6-disulfonate]	18050	----	E128	80%	20%	0.20%	0.20%	2.00%	0.50%	10	3	40
Fast Green FCF	Food Green 3 [Disodium salt of 4-[[4-(N-ethyl-para-sulfobenzylamino)phenyl] [4-hydroxy-2-sulfonium-phenyl]methylene] 1-(N-ethyl-N-para-sulfobenzyl)-Δ ^{2,5} - cyclohexadienimine]	42053	Green 3	----	85%	15%	0.16%	0.20%	1.00%	0.50%	10	3	40

All Food Colours can be available with FDA certifications.



DRIVEN ENTERPRISE

LAKE COLOURS



PRODUCT NAME	C.I NO.	EEC NO.
LAKE TARTRAZINE (F.D &C. Yellow 5)	19140:1	E 102
LAKE SUNSET YELLOW FCF (F.D. & C Yellow 6)	15985:1	E 110
LAKE PONCEAU 48	16255:1	E 124
LAKE CARMOISINE	14720:1	E 128
LAKE INDIGO CARMINE (FD. &C. Blue 2)	73015:1	E 132
LAKE ERYTHROSINE (FD. & C. Red 3)	45430:1	E 127
LAKE BRILLIANT BLUE FCF (F.D. &C. Blue 1)	42090:1	E 133
LAKE CHOCOLATE BROWN HT	20285:1	E 155
LAKE AMARANTH (F.D. & C. Red 2)	16185:1	E 123
LAKE QUINOLINE YELLOW (WS)	47005:1	E 104
LAKE ALLURA RED (F.D. & C. Red 40)	16035:1	E 129
LAKE PATENT BLUE V	42051:1	E 131
LAKE BLACK PN	28440:1	E 151
LAKE FAST RED E	16045:1	-----
LAKE FOOD GREEN S	44090:1	E 142
LAKE FOOD RED 2G	18050:1	E 128
LAKE FAST GREEN FCF (F.D. & C. Green 3)	42053:1	-----

PURE DYE CONTENT (RANGE)

• 12% TO 16% • 26% TO 30% • 36% TO 40%

All blended lake colours are
available as per requirement.

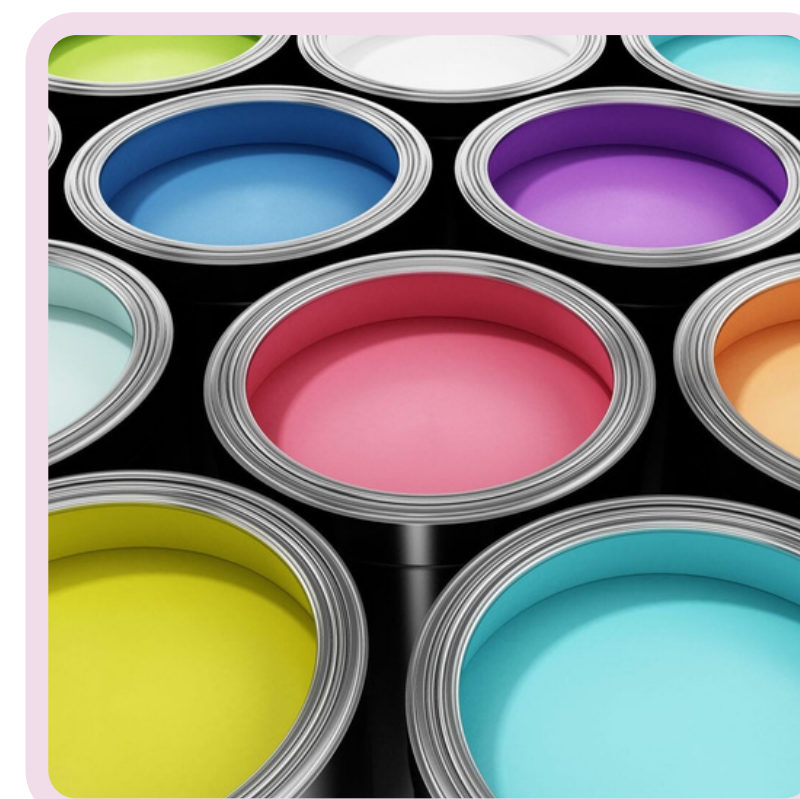
www.drivenenterprise.in

FD&C COLOURS

FD&C YELLOW 5	FD&C BLUE 2	FD&C RED 4
FD&C YELLOW 6	FD&C RED 2	FD&C RED 40
FD&C BLUE 1	FD&C RED 3	FD&C GREEN 3

D&C COLOURS

D&C YELLOW 10 • D&C YELLOW 11 • D&C ORANGE 4 • D&C RED 22 • D&C RED 28
D&C RED 30 • D&C RED 33 • D&C GREEN 5 • D&C GREEN 6 • D&C GREEN 8



BLENDED FOOD COLOURS

EGG YELLOW	LIME GREEN
YOLK YELLOW	APPLE GREEN
ORANGE RED	PEA GREEN
STRAWBERRY RED	BLACK CURRENT
ROSE PINK	KESAR SUPRA
RASPBERRY RED	FALSA
GRAPE JUICE	KALA KHATTA
VIOLET	DARK ORANGE
COFFEE BROWN	PURPLE
CHOCOLATE BROWN	BLACK
DARK CHOCOLATE	AQUA BLUE